

TU-S9 Windows 7 Installation Instructions

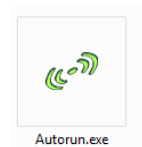
Hardware Installation

Note: Do not connect the TU-S9 until instructed to do so.

1. Go to <http://www.trendnet.com/downloads> to download the TU-S9 Windows 7 Drivers (Driver_TU-S9_Win7.zip). Save the file to your desktop.

2. Right click on **Driver_TU-S9_Win7.zip** and select Extract All. Follow the wizard to uncompress the file.

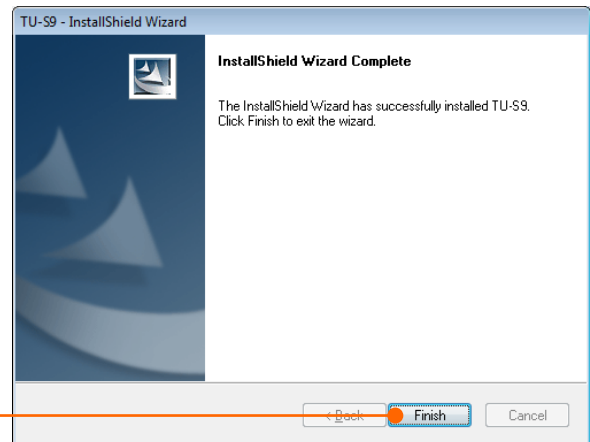
3. Browse the **Driver_TU-S9_Win7** folder and double click on **Autorun.exe**.



4. Click **Install Driver**.



5. Follow the InstallShield Wizard and then click **Finish**.



6. Connect the adapter to an available USB port of your computer.

7. Drivers will install automatically.



8. Connect a serial device to the TU-S9.

Your installation is now complete.

Troubleshooting

1. Windows is unable to recognize my hardware. What should I do?

1. Make sure your computer meets the minimum requirements as specified in Section 1 of this Quick Installation Guide.
2. Try plugging the TU-S9 into a different USB port.

2. Can I use the TU-S9 with my serial keyboard, mouse, or joystick?

The TU-S9 does not support interrupt transfer mode devices. If your serial keyboard, mouse, or joystick is an HID Device, it is not supported.

3. Can I connect or disconnect the TU-S9 while the computer is on?

Yes, you can connect or disconnect TU-S9 while the computer is on because the USB interface is Plug-and-Play compliant and hot-pluggable.